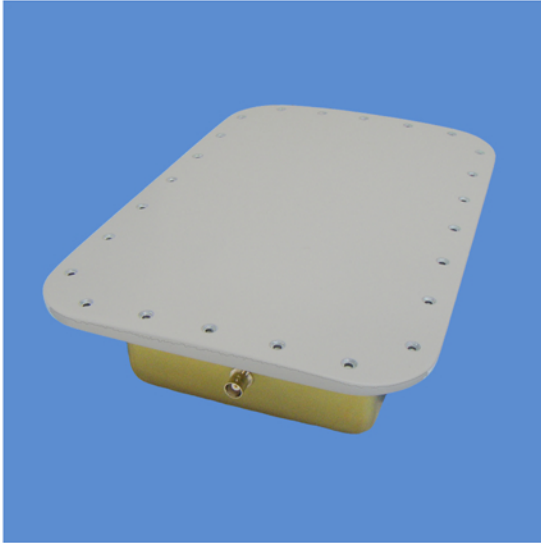


Marker Beacon S35-2000-10



DESCRIPTION

S35-2000-10: Flush-mounted Marker Beacon antenna designed for aircraft frames with 49-inch radius. The antenna features a hermetically-sealed construction consisting of a foam-filled, one-piece drawn aluminum can with a fiberglass radome. The radiating element is DC-grounded to withstand lightning strikes.

FEDERAL & MILITARY SPECS: FAA TSO C35c, DO-108.

| SPECIFICATIONS | |
|-----------------------------|--|
| MODEL | S35-2000-10 |
| ELECTRICAL | |
| Frequency | 75 MHz |
| VSWR | ≤ 1.5:1 @ 75 MHz ≤ 5.0:1 @ 75 ± .15 MHz |
| Pattern | Single Downward Lobe |
| Polarization | Linear (Major Axis) |
| Impedance | 50 Ohms |
| Lightning Protection | DC Grounded |
| MECHANICAL | |
| Weight | 1.9 lbs. |
| Height | 3.16 in. |
| Length | 11.75 in. |
| Width | 7.75 in. |
| Material | Aluminum Alloy Cavity / Fiberglass |
| Finish | Light Gray Primer |
| Connector | BNC Female |
| ENVIRONMENTAL | |
| Temperature | -55°C (-67°F) to +71°C (160°F) |
| Vibration | ± 10 Gs |
| Altitude | 70,000 ft. |

